



River Murray Water Resources Report

Issue 58: 1 June 2010

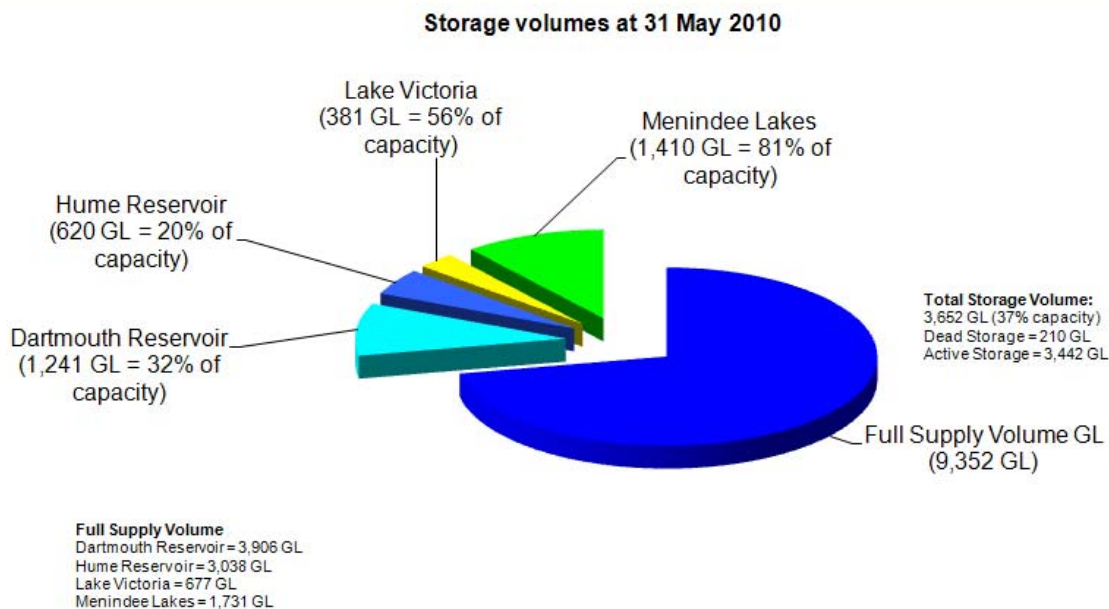
Observations at a glance

- Irrigators are currently able to access 62% of their water entitlement.
- The volume of water in upstream storages is currently 3,652 (39% capacity), compared to 1,414 GL (15% capacity) at the same time last year.
- River Murray system inflows during May 2010 were about 160 GL.

Murray-Darling Basin storages

The volume of water in storage in Hume and Dartmouth Reservoirs, Lake Victoria and Menindee Lakes is currently 3,652 GL (39% capacity), compared to 1,414 GL (15% capacity) at the same time last year. Current storage levels are shown in **Figure 1**.

Figure 1: Murray-Darling Basin storages



Rainfall and River Murray inflows

River Murray system inflows during May 2010 were about 160 GL. The total River Murray System inflow from 1 June 2009 to the end of May 2010 was about 3,230 GL. This was well below the long-term average for this period of about 8,840 GL. It was also below the average for this period over the past 10 years of 4,425 GL.

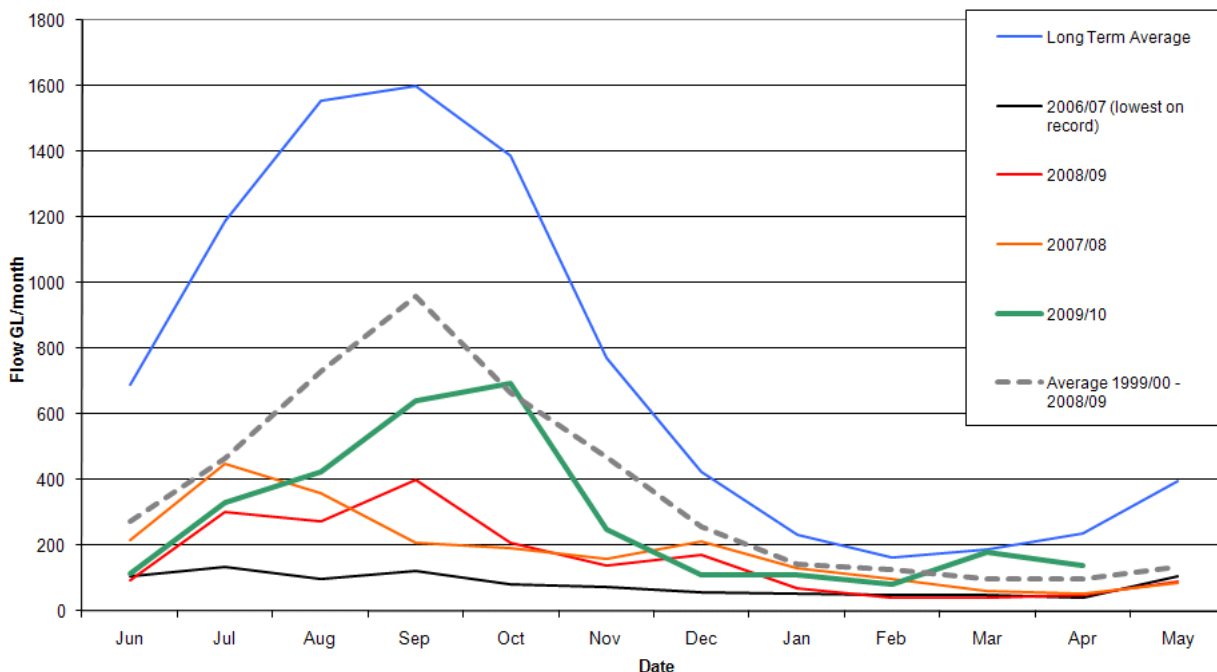
Table 1 and Figure 2 show the River Murray System inflows.

Table 1: River Murray system inflows from 1 June to 31 May in various years

Period 1 June to 31 May	River Murray System Inflow (GL) (Rounded totals)
2006-07	970
2007-08	2,230
2008-09	1,880
2009-10	3,230
Long-term average	8,840
Last 10 years	4,425

Figure 2: River Murray system inflows

River Murray System Inflows (excluding Menindee and Snowy)



River operations

About 171 GL was delivered to South Australia during May 2010 compared to the normal entitlement flow for May of 93 GL. The additional water was required to deliver water to the Lower Lakes to meet the environmental reserve.

A total of 810 GL has been delivered to the Lower Lakes at the end of May 2010. This includes a mix of water allocated in 2009-10, South Australian Government water purchases and water originating from the floods earlier this year in New South Wales and Queensland. This is the highest inflow since 2005-06 and has increased the water level in the Lake Alexandrina to minus 0.41m AHD. This level will increase further over the next few months in response to additional water being delivered to the Lower Lakes.

The flow to South Australia will remain high during June 2010 to facilitate the delivery of South Australia's entitlement flow and water for the Lower Lakes. Flow past Lock 1 is currently averaging 4,600 ML/day.

Information about river operations upstream of the South Australian border is available from the Murray-Darling Basin Authority website www.mdba.gov.au

Salinity and water levels

Salinity levels between Lock 6 and Murray Bridge remain low. However below Wellington salinity levels in both Lakes Alexandrina and Albert remain high. The average salinity in Lake Alexandrina is currently 3,450 EC and in Lake Albert is currently 15,450 EC.

The average water level in Lake Alexandrina is currently about minus 0.41m AHD, and in Lake Albert the average water level is about minus 0.49m AHD.

Table 2 shows the current water levels and salinity at selected locations.

Table 2: Water and salinity levels at 31 May 2010

	Actual Water Levels at 31/05/10		Full Supply Level Level	Variation from Pool Level	Current EC Level
	U/S mAHD	D/S m AHD	U/S of Weir m AHD	U/S of Weir m AHD	
Lock 6	19.26	16.37	19.25	-0.09	154
Lock 5	16.32	13.43	16.30	0.02	205
Lock 4	13.22	10.59	13.20	0.02	237
Lock 3	9.84	6.51	9.80	0.03	263
Lock 2	6.20	3.50	6.10	0.10	247
Lock 1	3.25	-0.03	3.20	0.05	291
Lake Alexandrina (average)	-0.41				3,450
Lake Albert (average)	-0.49				15,450
Goolwa	-0.08				19,650
Water levels below Lock 1 are affected by wind and will vary throughout the day					
EC Readings below Lock 1 are averages and will vary throughout the day					

Floodwater information

On 28 May 2010, the NSW Office of Water released its latest information paper about the passage of floodwaters along the Barwon-Darling River to the Menindee Lakes and the Lower Darling River. This document can be found under the "News Updates" heading at www.water.nsw.gov.au/

Water allocations in South Australia and interstate

River Murray irrigation allocations in South Australia are currently at 62% of water entitlement and will remain at this level until 30 June 2010.

The 2010-11 carry-over application process closed on 31 March 2010. Late applications will not be accepted.

The latest information about allocations in New South Wales is available at <http://www.water.nsw.gov.au/>

The latest information about allocations in Victoria is available at http://www.g-mwater.com.au/news/media-releases/2009_media_releases

Weather outlook

The Bureau of Meteorology recently released their national rainfall and temperature outlook for the Murray-Darling Basin for the period June to August 2010. The seasonal climate outlook shows a 30-45% chance of exceeding median rainfall, and a 70-75% chance of exceeding median maximum daytime temperatures.

DISCLAIMER

The Department of Water, Land and Biodiversity Conservation, its employees and servants do not warrant or make any representation regarding the use, or results of use of the information contained herein as to its correctness, accuracy, currency or otherwise. The Department of Water, Land and Biodiversity Conservation, its employees and servants expressly disclaim all liability or responsibility to any person using the information or advice contained herein.